

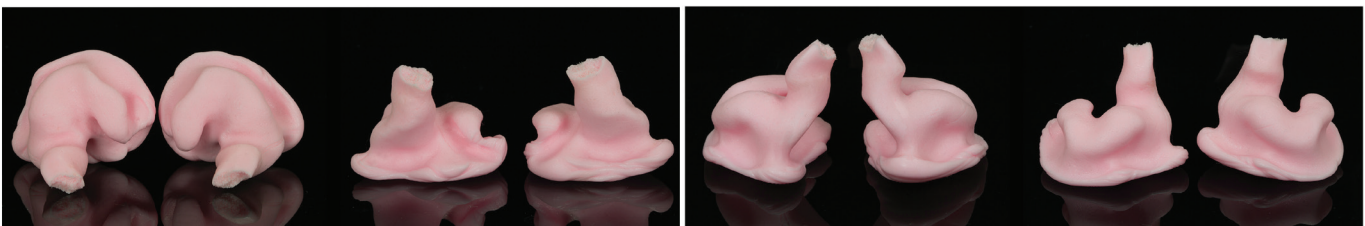
1. A full impression is required of each ear. It must include the full helix, crus of the helix, tragus and antitragus. **IMPORTANT NOTE: The impression must be taken completely PAST the second bend of the ear canal.**
(Be sure to examine the ear canal for any obtrusions or inflammation.)
2. We require an impression made with high viscosity silicone impression material. For best results request the use of Westone 'Pink Silicast' from your audiologist.
3. The impression must be an OPEN MOUTH TYPE. Use a 1-2" bite block during the impression process to reduce jaw movement. This will yield a better seal in the final product.

Customer, after you receive the impressions please package them for mailing to this address:

64 Audio
2811 E. Evergreen Blvd
Vancouver, WA 98661, USA

*** Be sure to include your filled out Impressions Packing Slip with your impressions.**
Do not wait for more than a month to send your impressions after getting them made.
Impression material changes over time and can impact the fit of your in ear monitors.

4. **If you are unsure whether the impression matches our needs, please email us pictures and we will confirm if they are usable. This is highly recommended for international customers.**
Please email the pictures to impressions@64audio.com. Pictures should be from multiple angles and in-focus to show detail of the outer ear and canal.



For questions or concerns about these instructions, please contact our support services.

ATTN. AUDIOLOGISTS:

Want 64 Audio to refer local customers to you?

Please provide contact information on the right and we will add you into our database.

Name: _____

Company: _____

Address: _____

Phone: _____

Website: _____

Email: _____

The following images are meant for reference purposes only. We will not accept impressions that are already pre-trimmed.
 Impressions must include all key areas to be usable for custom in-ear monitors.

MULTIPLE ANGLED EXAMPLE OF GOOD IMPRESSIONS

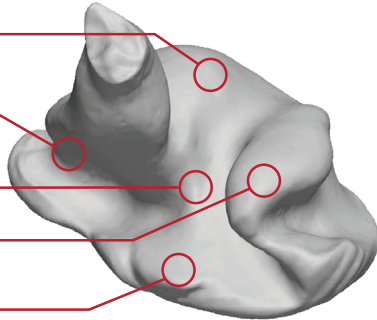
BOWL

TRAGUS

CRUS OF HELIX

CYMBA

EXTRA MATERIAL



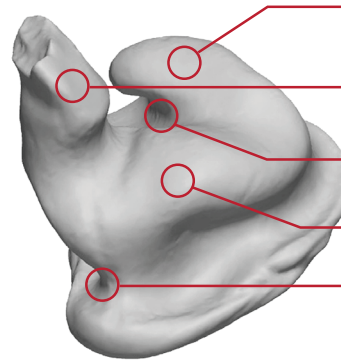
CYMBA

2ND BEND

CRUS OF HELIX

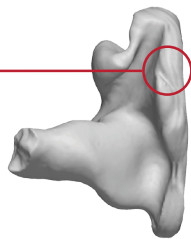
BOWL

TRAGIC NOTCH

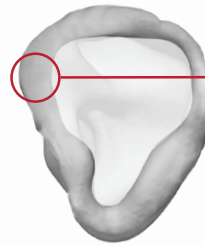


WE REQUIRE EXTRA MATERIAL OUTSIDE OF THE EAR ABOVE THE TRAGUS

EXTRA MATERIAL

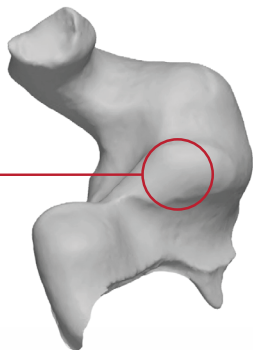


EXTRA MATERIAL

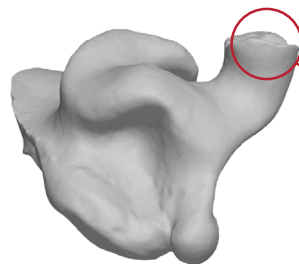


⚠️ EXAMPLES OF BAD IMPRESSIONS ⚠️

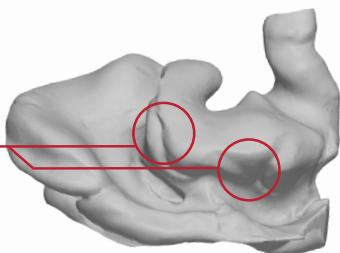
MISSING CYMBA



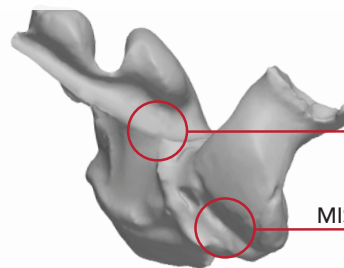
CANAL DOESN'T GO PAST 2ND BEND



MISSING BOWL



MISSING CRUS OF HELIX



MISSING TRAGUS/TRAGIC NOTCH